

Appendix 1: Lung Cancer Incidence and Mortality by County in Oklahoma, 1999-2022

Figure 1. Yearly Trends in Percent Stage at Diagnosis in Oklahoma, 1999-2022

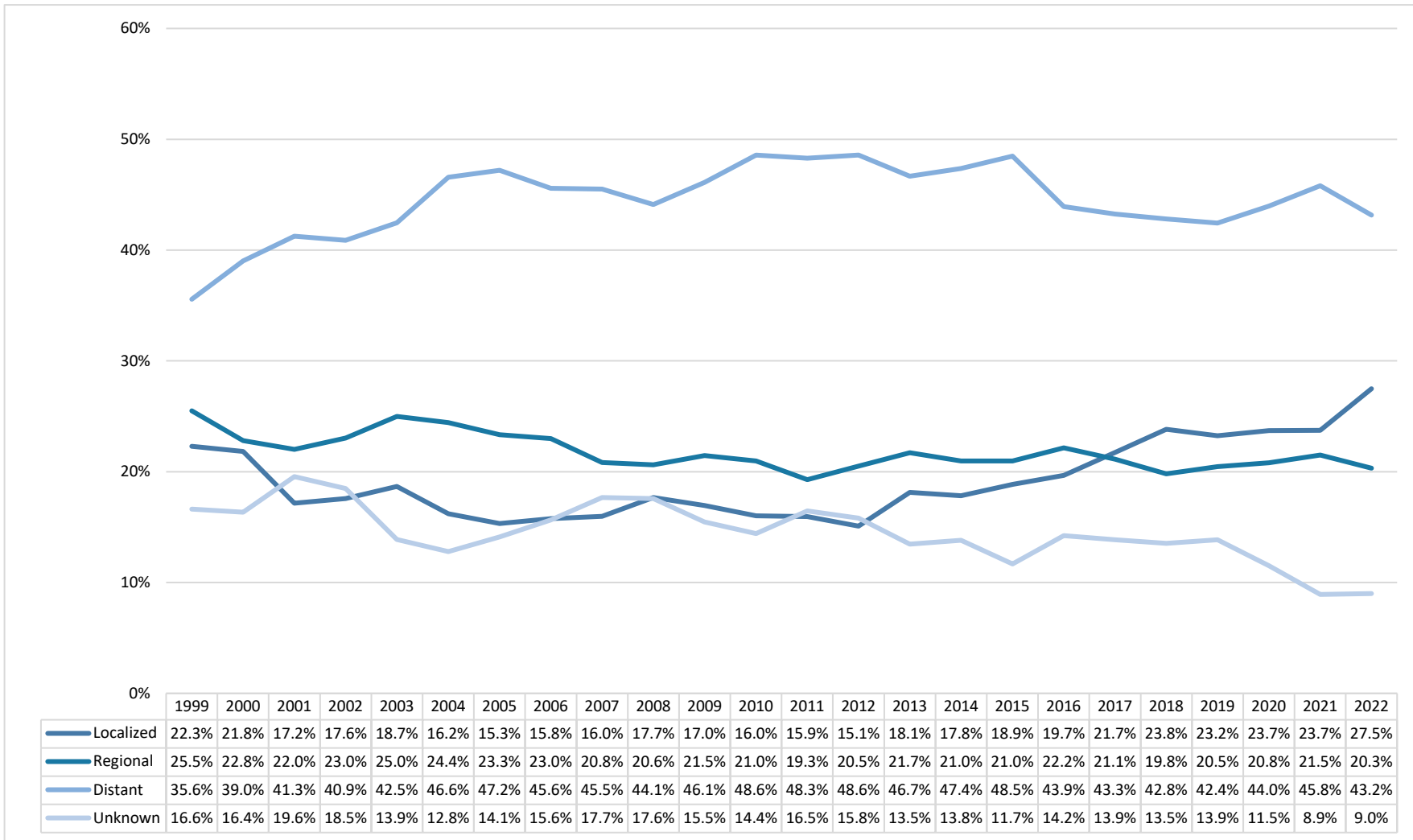
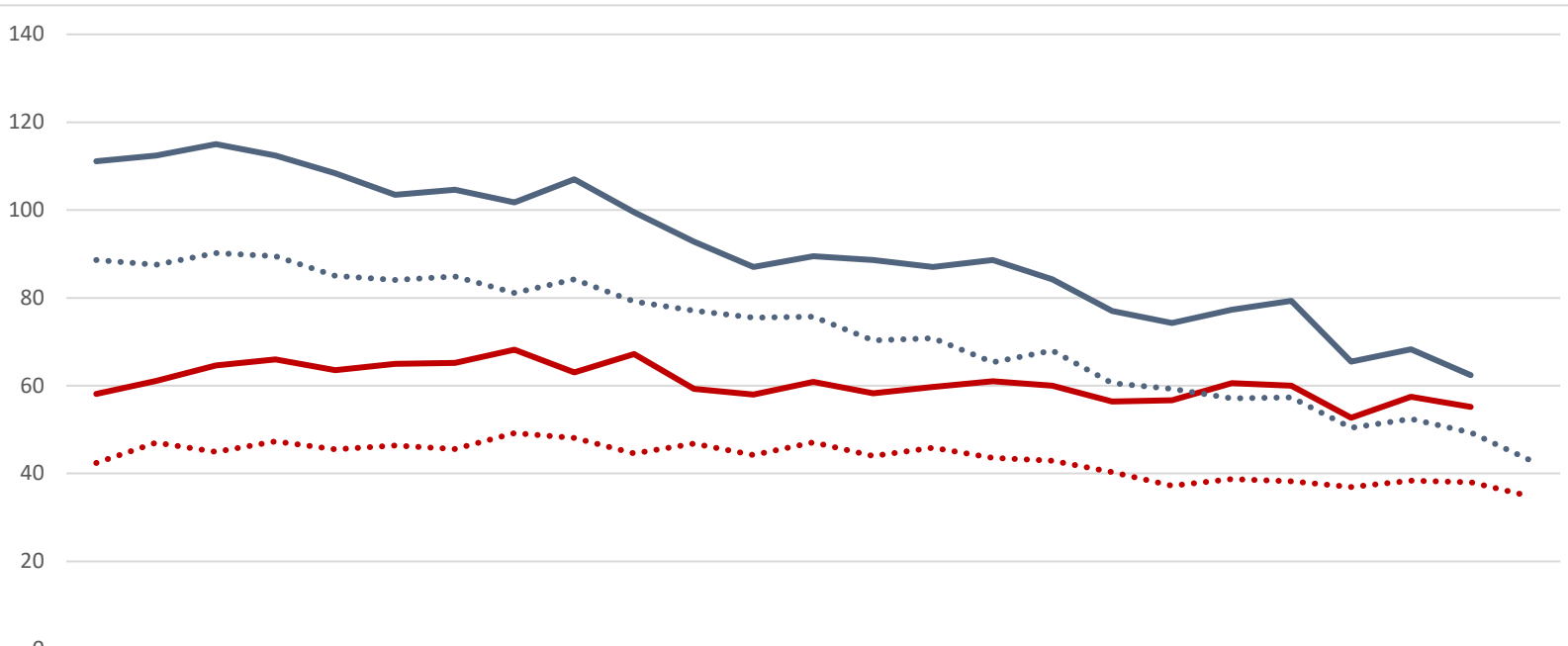
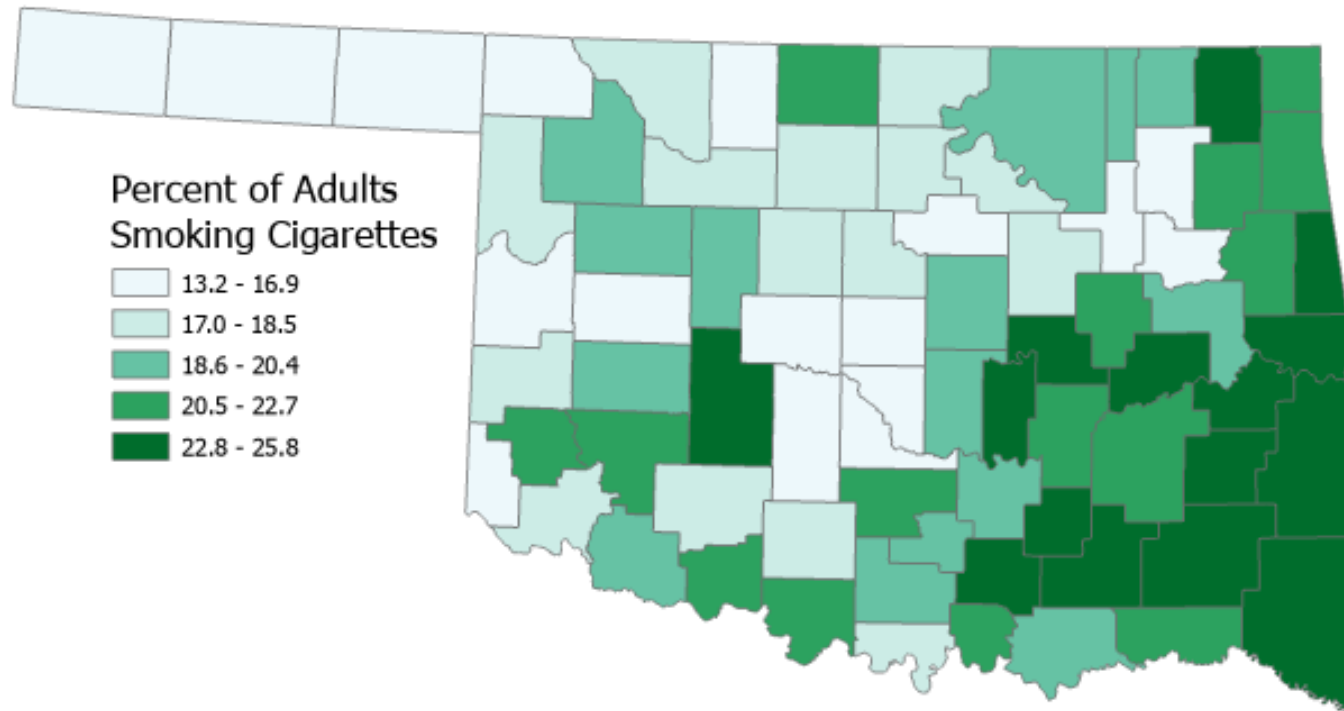


Figure 2. Trends of Age-Adjusted Lung Cancer Incidence and Mortality Rates by Sex in Oklahoma, 1999-2023



	1999	2000	2001	2002	2003	2004	2005	2006	2007	2008	2009	2010	2011	2012	2013	2014	2015	2016	2017	2018	2019	2020	2021	2022	2023
Male Incidence	111.1	112.4	115.0	112.4	108.4	103.5	104.6	101.7	107.0	99.5	92.8	87.0	89.5	88.6	87.0	88.6	84.2	77.0	74.3	77.3	79.3	65.5	68.3	62.4	
Female Incidence	58.1	61.1	64.6	66.0	63.5	65.0	65.2	68.2	63.0	67.2	59.3	58.0	60.9	58.3	59.7	61.0	60.0	56.4	56.7	60.6	60.0	52.7	57.5	55.2	
Male Mortality	88.6	87.5	90.2	89.5	85.0	84.1	84.9	81.1	84.2	79.2	77.1	75.5	75.7	70.3	70.8	65.3	68.0	60.6	59.3	57.1	57.3	50.4	52.4	49.3	43.0
Female Mortality	42.4	47.0	44.9	47.3	45.5	46.4	45.6	49.2	48.1	44.6	46.8	44.2	47.1	44.0	45.9	43.6	42.9	40.3	37.2	38.7	38.2	36.9	38.4	38.0	34.8

Figure 3. Cigarette smoking by county in Oklahoma, BRFSS 2022



Source: County Health Rankings & Roadmaps: building a culture of Health, County by County. Downloaded 06/09/2025 <https://www.countyhealthrankings.org/app/oklahoma/2025/downloads>.